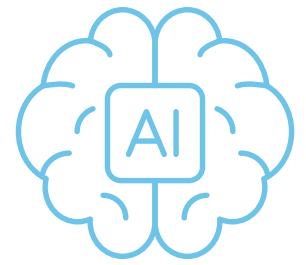


Learning with GenAI

A quickstart guide for students



Remember that permissible use of GenAI in submitted work in your courses will be outlined in your course syllabus: take note of this guidance and ask if things are not clear.



USE CASES

BE CURIOUS AND CRITICAL OF THE OUTPUTS THAT ARE GENERATED

Review and think critically about GenAI outputs to the best of your ability and address false or harmful aspects before sharing with others, including in your academic work.

USE WITH INTEGRITY

Any academic work you submit as a student should be your own, including essays, literature reviews, theses, and exams. Submitting your own work means that if you use external resources, including GenAI, you should take that information and apply your own analysis, synthesis, evaluation, critique, etc.. Simply paraphrasing GenAI output does not, by itself, make it your own work.

RESPECT INSTRUCTOR (AND OTHERS!) INTELLECTUAL PROPERTY

Submitting materials created by instructors, TAs, or other students into GenAI tools without their permission may constitute copyright infringement. Please make sure you understand the copyright status of material you upload.

DECLARE AND DOCUMENT YOUR USE

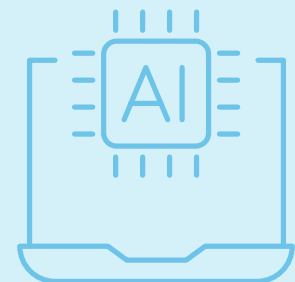
Use of GenAI to produce text, images, videos, or other materials shared with others for teaching, learning and assessment purposes should be acknowledged by attributing tools and methods used to create materials. Record your process and prompts in order to be able to 'share your working' if required.

SUPPORTING YOUR LEARNING OUTSIDE COURSE ASSESSMENTS

Gen AI tools can support your personal learning and research on topics, but beware that these tools can make it seem like 'learning' is easy; real learning takes effortful engagement and practice.

USING AS A STUDY AID

GenAI tools can be useful for studying purposes, such as generating practice exam questions, asking a chatbot to act as a tutor, and more, but be aware that content generated by GenAI may not be accurate and so may not always be a reliable study source.



<https://genai.ubc.ca/guidance/teaching-learning-guidelines/learning-with-genai/>

